

# Medical Center

Charlotte has in recent years gained a national reputation as a medical and surgical center. One hundred and fifty white and 12 colored physicians, a hospital investment of \$3,250,000, approximately 900 hospital beds.

Included among the physicians you will find at least one specialist from each of the 17 branches recognized by the American Board of Specialists.

Recently the Camp Sutton Substation Hospital was established in the hospital building formerly known as the Charlotte Sanatorium.

There have been established prophylaxis stations for the use of military personnel at the following locations:

Camp Sutton Sub-Hospital,  
7th and Church Streets.

Pro-Station—305 S. Mint St.

Pro-Station—624 E. 4th St.

Pro-Station—Health Dept., 615  
E. 4th St. (Colored)

*Top Left: Charlotte Memorial Hospital. Bottom Left: Presbyterian Hospital. Below: Mercy Hospital.*



# City Buses

The Charlotte Motor Bus System reaches into every residential and industrial section of the city embracing 111 miles. Convenient schedules are maintained on all lines and the service is complete in every detail.

Information concerning routes and schedules may be secured at the Soldier's Information Center at 235 S. Tryon St. or from Bus Information Office on the Square where maps and schedules are available.

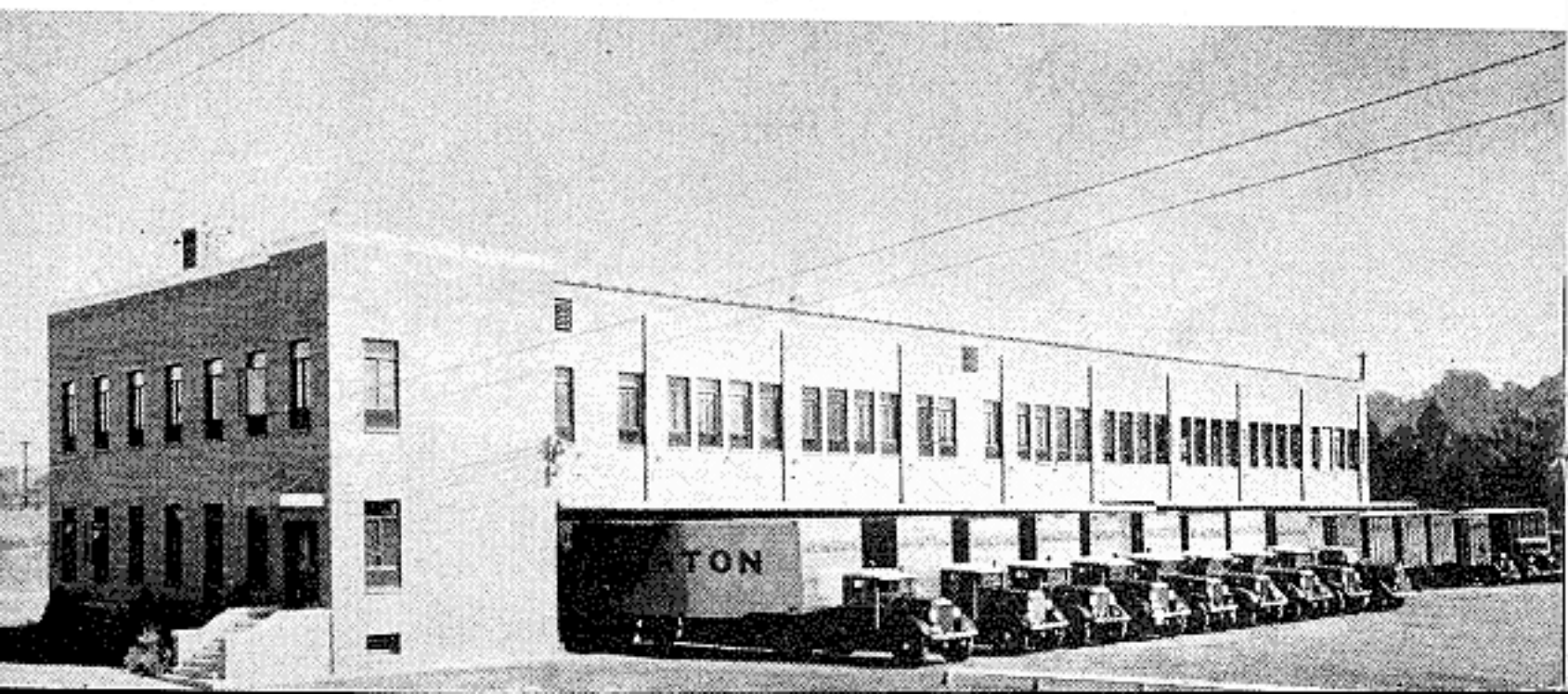


Charlotte is the center for motor transportation for the Southeast—over 60 different carrier lines either have headquarters, branch offices or stations in the City.



Charlotte is the distributing center of the Carolinas and is the natural radial point for the railroads of this section. There are eight railway lines radiating from Charlotte, this situation making possible a maximum of railway trackage for new industries of various kinds. Charlotte has an abundance of skilled and unskilled labor willing to give an honest day's work for a reasonable wage. Charlotte is not disturbed by continued labor difficulties, strikes and labor agitation.

*Horton Motor Lines Freight Depot*





*Union Bus Terminal  
418 W. Trade St.*

## *Transportation*

Motor bus lines maintain regular schedules to Greensboro, Raleigh, Asheville, Winston-Salem, Salisbury, Columbia, Greenville, Spartanburg, Rock Hill and Chester, connecting at those cities for more distant points.

### THERE ARE FOUR RAILROADS ENTERING CHARLOTTE:

Southern (Main line to New York-New Orleans; branch lines to Statesville and Columbia)

Seaboard Air Line (To Wilmington)

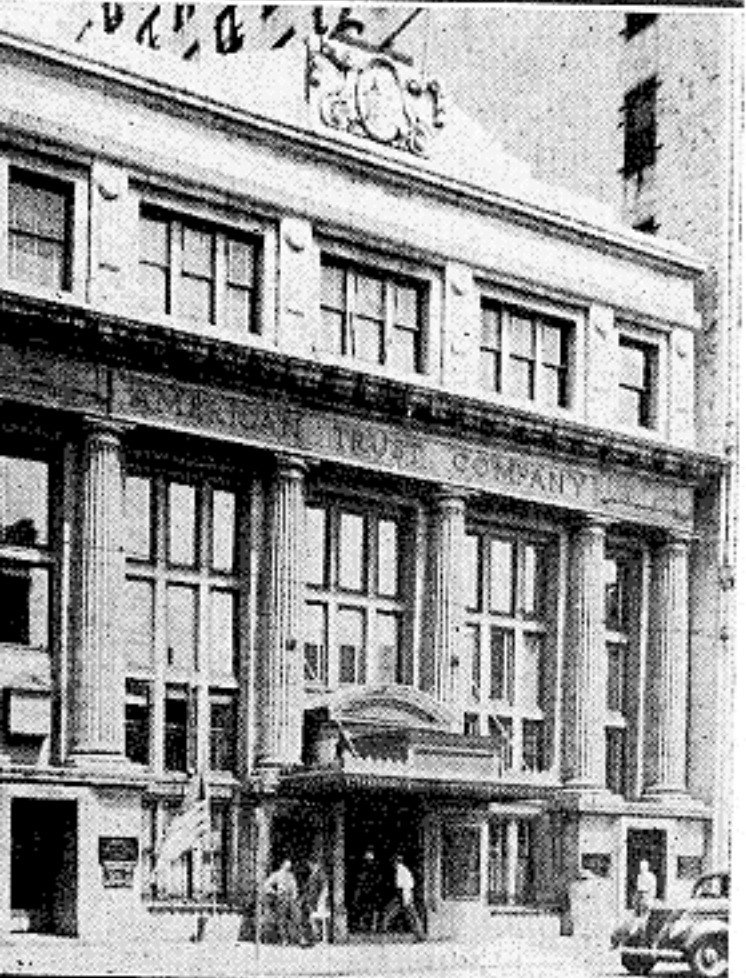
Norfolk-Southern

Piedmont & Northern



# Charlotte—

## Financial Capital of the Carolinas



Two National Banks, two State Bank and Trust Companies, three Industrial Banks and the Charlotte Branch of the Fifth District Federal Reserve Bank cause Charlotte to be considered as the financial center of the Carolinas.

Rounding out the financial accommodations provided are branch offices of houses doing business on the nation's principal exchanges.

---

---

# Points of Interest in Charlotte

THESE POINTS MAY BE REACHED ON CITY BUSES

<i>Place</i>	<i>Address</i>	<i>On Bus Numbers</i>
Armory Auditorium, Cecil Street.....		1-2-6-10
Baseball Park, 514 Magnolia Ave.....		4-11
Bryant Park, Wilkinson Blvd.....		2-8
Charlotte Public Library, 310 N. Tryon St.....		4-5-11
City Hall, Davidson & E. Trade Sts.....		1-3-6-10
County Court House, Alexander & E. Trade Sts.....		1-3-6-10
Elk's Club, 801 S. Tryon St.....		4-5-6-9-12
Independence Park, Elizabeth.....		1-2-6-10
Latta Park, Dilworth.....		4-5-9
Masonic Temple, 329 S. Tryon St.....		1-2-6-10
Mint Museum, Eastover.....		9
Myers Park Club, Myers Park.....		3
Old Airport, Thrift.....		8
Queens College, Myers Park.....		1-3
Salvation Army, 314 N. Poplar St.....		4-5-11
Southern Station, Wilkes & W. Trade Sts.....		1-2-7-10
Stadium, Park Drive.....		1-2-6-10
Union Bus Terminal, 418 W. Trade St.....		1-2-7-10
U. S. Post Office, Mint & W. Trade Sts.....		1-2-7-10
Y.M.C.A., Second & S. Tryon Sts.....		1-2-6-10
Y.W.C.A., 418 E. Trade St.....		1-3-6-10
Seaboard Station, N. Tryon & Thirteenth Sts.....		5-11