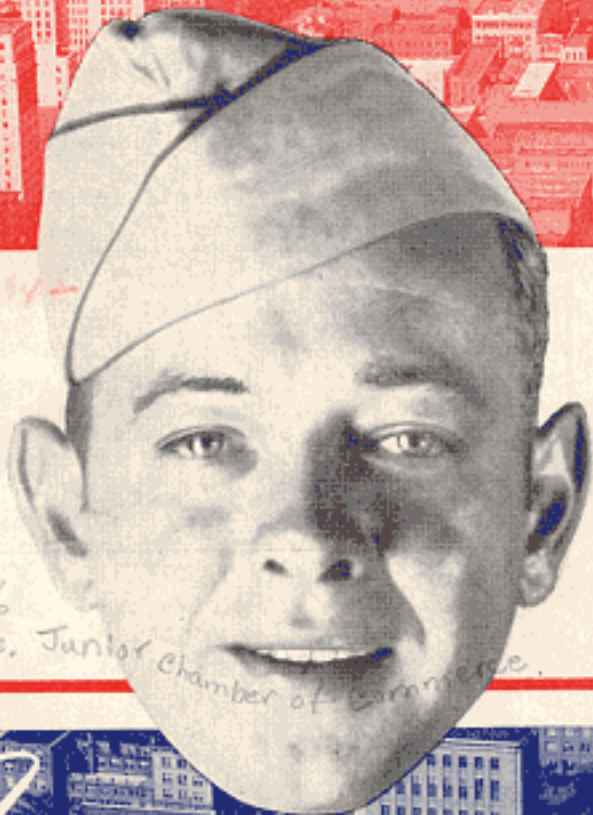


WELCOME SOLDIER!
TO CHARLOTTE,
NORTH CAROLINA

NCRC 917.56

*Welcome
Soldier!*



U. Dec 1942

NCRC
917.56
Charlotte, Junior Chamber of Commerce.

To

CHARLOTTE, NORTH CAROLINA



1st Vice-Pres.—Joe L. Brown
2nd V.-Pres.—Ernest A. Sessions

Secretary—Hoyt R. Galvin
Treasurer—Ashley L. Hogewood

President—Archie J. Thornhill

Charlotte Junior Chamber of Commerce

DIRECTORS

Robert R. Rhyne
Julius S. Felder

J. Kenneth Cook
Dr. Mike Palmer
Joe L. Norton

William Mc. Parker
Howard W. Halberstadt

TELEPHONE 3-1543—CHAMBER OF COMMERCE—P. O. BOX 2693

Charlotte, North Carolina

TO THE VISITING SERVICE MEN

Gentlemen:

The Charlotte Junior Chamber of Commerce is proud of the opportunity, made possible through the cooperation of a number of civic minded firms and individuals, to place in your hands this toast to you from our City.

This project was undertaken as a token of esteem for those members of our organization now in the armed forces of the United States.

It is our sincere hope that this booklet will prove both interesting and helpful to you and that it will be mailed to your home when you have finished with it.

Yours for Victory,

CHARLOTTE JUNIOR CHAMBER
OF COMMERCE

By A. J. Thornhill
President



Welcome Soldier!

to Charlotte, North Carolina

"QUEEN CITY OF
THE SOUTH"



*Published by the Junior Chamber
of Commerce, Charlotte, North
Carolina, with the cooperation of
Public Spirited Citizens and Firms*

CHARLOTTE

"The Queen City"

(Courtesy The Charlotte Chamber of Commerce, Inc., Charlotte, N. C.)

CHARLOTTE is located in the center of a territory recognized as the most rapidly developing industrial and commercial section in the South. The eyes of the commercial as well as tourist world are focused on the Piedmont Carolinas, the section of which Charlotte is the geographic and industrial center.

The city that had the greatest increase in population between 1930-1940 was Miami, Fla., with the following cities in consecutive order: San Diego, Calif.; Washington, D. C.; Jacksonville, Fla.; Houston, Texas; and CHARLOTTE, N. C. Charlotte stood sixth in the nation, with a gain of 21.4%. There are now in the U. S. only 92 cities of more than 100,000 population, and Charlotte is the 91st city, with 100,899 inhabitants. In 1930 its place was the 101st, so then, it moved up ten places within the ten-year period.

Hard-surfaced roads radiate from Charlotte in every direction. Eleven highways enter Charlotte. Three national highways cross North Carolina State highways at Charlotte. North Carolina has 9,000 miles of paved roads. Two million people can come to Charlotte from a radius of 100 miles by automobile, transact business and return home on the same day.

